


PANEER SHARMA IS THE EXECUTIVE CHIEF DIRECTOR OF THE NATIONAL AERONAUTICS AND SPACE ADMINISTRATION.

AND UPON HIS PROMOTION TO NASA'S TOP POSITION, HIS FIRST ORDER OF BUSINESS WAS TO REVIEW THE *BUDGETS* OF ITS INTERNATIONAL TELESCOPES, AND MAKE SURE ALL THE MONEY WAS BEING SPENT *APPROPRIATELY*.



HIS *SECOND* ORDER OF BUSINESS WAS TO GET ALL THREE OF THE MAJOR LAND-BASED, LONG-RANGE, OPTICAL REFLECTING TELESCOPES REFURBISHED, RE-STAFFED--

--AND AGAIN OPERATIONAL.



IN HONOR OF THOSE WE LOST.



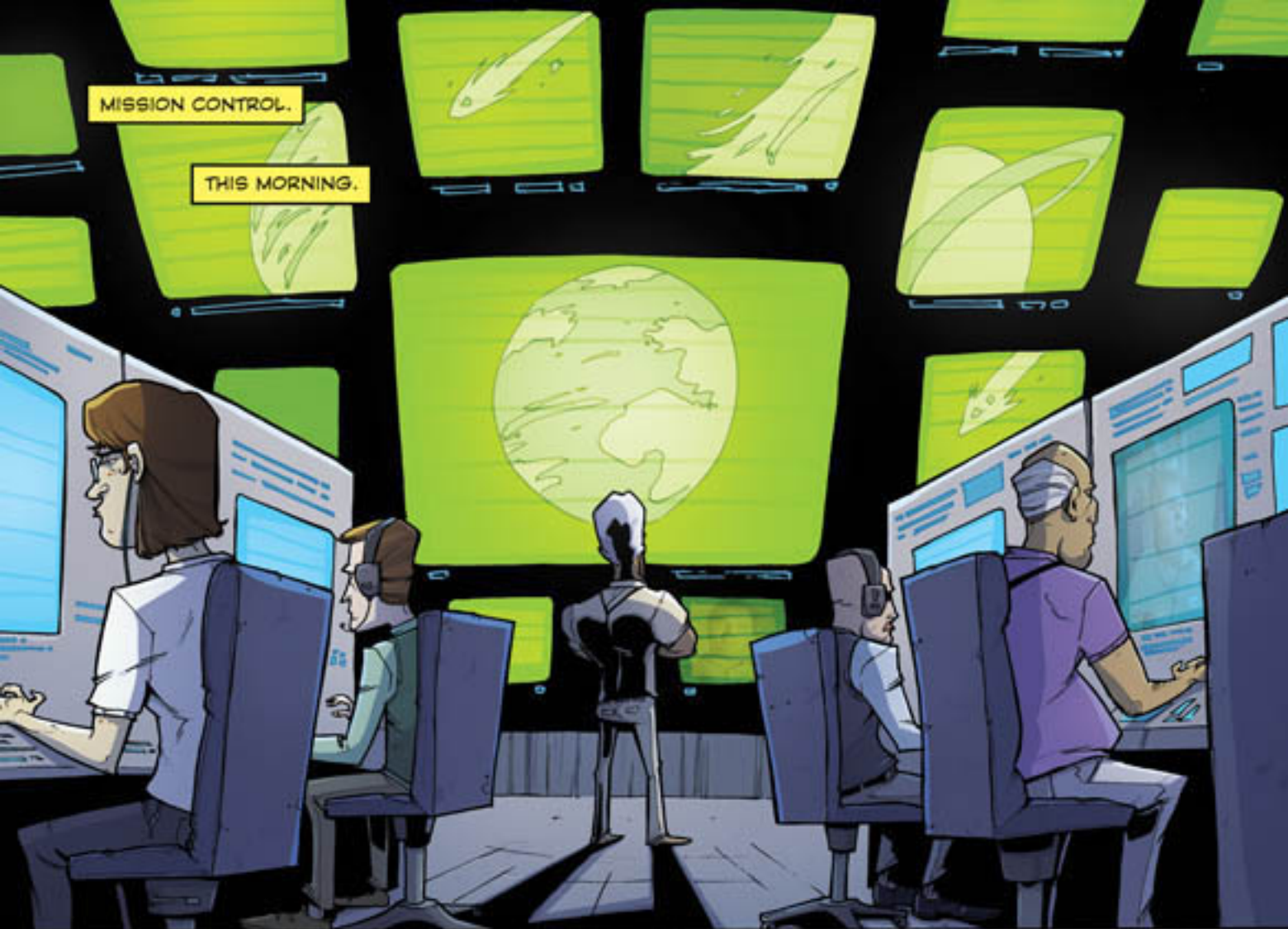
THE GARDNER-KYASHENNAYA
INTERNATIONAL TELESCOPE
IN THE ARCTIC CIRCLE.



FARMINGTON-KUPUSTA IN
THE HEART OF THE AMAZON.



AND GRANGER-COLLIBIAC
IN NORTHERN SIBERIA.



MISSION CONTROL.

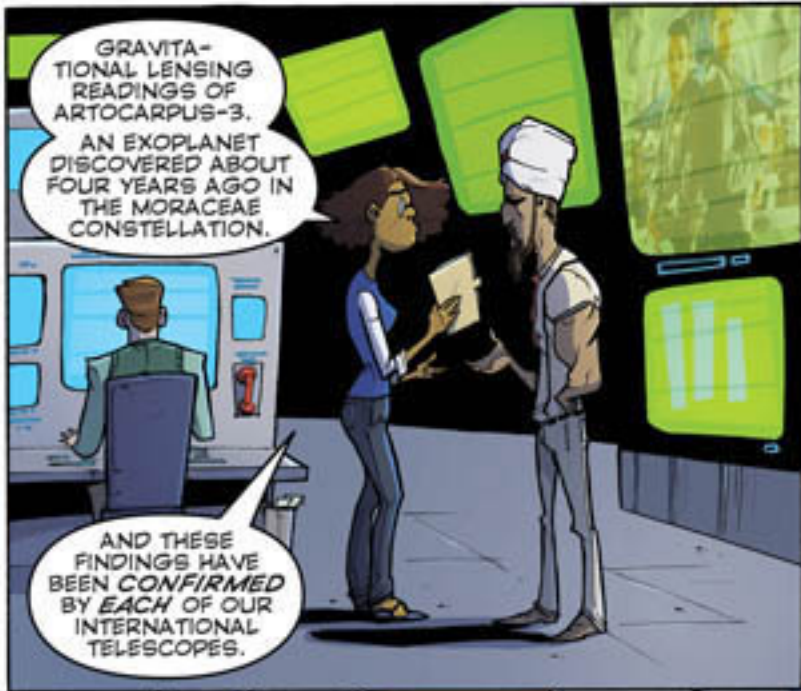
THIS MORNING.



EXECUTIVE CHIEF DIRECTOR SHARMA?

HMM?

GOT SOMETHING I THINK YOU SHOULD SEE.



GRAVITATIONAL LENSING READINGS OF ARTOCARPUS-3. AN EXOPLANET DISCOVERED ABOUT FOUR YEARS AGO IN THE MORACEAE CONSTELLATION.

AND THESE FINDINGS HAVE BEEN CONFIRMED BY EACH OF OUR INTERNATIONAL TELESCOPES.



HOLY
[REDACTED]
!!!

ARTOCARPUS-3.

