

MARVEL

1

THOMPSON
DE ILLIS
RODRÍGUEZ
LÓPEZ

ROAD TO EMPYRE



THE KREE/SKRULL WAR

BONUS DIGITAL EDITION — DETAILS INSIDE

RATED T+
\$4.99 US



7

ROAD TO **EMPYRE**

THE KREE/SKRULL WAR



The Warners are a seemingly average family who reside in Stamford, Connecticut. But while they live as humans, they are actually Skrulls--alien beings whose bodies contain unstable molecules that enable them to take any shape at will. As operatives for the Skrull Empire, they use their abilities to hide in plain sight and prepare the way for the inevitable annexation of Earth.

writer ► **Robbie Thompson**
artists ► **Mattia De Iulis**
[Present Day Sequence];
Javier Rodríguez &
Álvaro López [Flashback
Sequence]

letterer ► **VC's Joe Caramagna**
cover ► **Phil Noto**
variant cover ► **Ron Lim &**
Israel Silva

graphic designer ► **Carlos Lao**
assistant editor ► **Martin Biro**
associate editor ► **Alanna Smith**
editor ► **Tom Brevoort**
editor in chief ► **C.B. Cebulski**

ROAD TO EMPYRE: THE KREE/SKRULL WAR No. 1, May 2020. Published as a One-Shot by MARVEL WORLDWIDE, INC., a subsidiary of MARVEL ENTERTAINMENT, LLC. OFFICE OF PUBLICATION: 1290 Avenue of the Americas, New York, NY 10104. © 2020 MARVEL. No similarity between any of the names, characters, persons, and/or institutions in this magazine with those of any living or dead person or institution is intended, and any such similarity which may exist is purely coincidental. \$4.99 per copy in the U.S. (GST #R127032852) in the direct market; Canadian Agreement #40668537. Printed in the USA. KEVIN FEIGE, Chief Creative Officer; DAN BUCKLEY, President, Marvel Entertainment; JOHN NEE, Publisher; JOE QUESADA, EVP & Creative Director; DAVID BOGART, Associate Publisher & SVP of Talent Affairs; TOM BREVOORT, SVP of Publishing; DAVID GABRIEL, VP of Print & Digital Publishing; JEFF YOUNGQUIST, VP of Production & Special Projects; DAN CARR, Executive Director of Publishing Technology; ALEX MORALES, Director of Publishing Operations; DAN EDINGTON, Managing Editor; SUSAN CRESPI, Production Manager; STAN LEE, Chairman Emeritus. For information regarding advertising in Marvel Comics or on Marvel.com, please contact Viti DeBellis, Custom Solutions & Integrated Advertising Manager, at vdebellis@marvel.com. For Marvel subscription inquiries, please call 866-511-5480. Manufactured between 02/28/2020 and 03/09/2020 by FRY COMMUNICATIONS, MECHANICSBURG, PA, USA.

ENCRYPTED MESSAGE TO SKRULL
HIGH COMMAND. PROJECT BLOSSOM
MISSION UPDATE, FILED BY GENERAL
G'IAH, ALIAS "GLORIA WARNER."

SIXTEENTH ATTEMPTED
TRANSMISSION.

WE WERE SENT TO
EARTH TO LIVE
AMONG THE HUMANS.

MY MATE, COLONEL KLRR,
ALIAS "CARL WARNER,"
AND I FORMED A FAMILY
UNIT, RAISING OUR
OFFSPRING ON THIS PLANET.

MADISON,
ALICE
AND IVY.

PERFECT
DAUGHTERS.

PERFECT
SOLDIERS.

WE NEVER WAVERED
IN OUR DEDICATION.

EVEN AFTER
WE LOST IVY.

ATTEMPTING TO
UNCOVER THE CREATORS
OF "PROJECT BLOSSOM,"
A NEW TECH DEVELOPED TO
REVEAL SKRULLS HIDDEN
ON EARTH, WE SUFFERED
ANOTHER BLOW...


...WHEN WE WERE
BETRAYED BY OUR
HANDLER, MOLOTH.

HE MURDERED
COLONEL KLRR.

CARL.

MY
HUSBAND.

BUT ALL
WAS NOT
LOST.

A close-up of Ivy Green, her face contorted in a scream of agony. She is connected to a complex machine with numerous tubes and wires. A red light glows on a device attached to her chest. The background is a dark, industrial setting with yellow light sources.

BEFORE HIS DEATH,
CARL HAD DISCOVERED
IVY WAS STILL ALIVE.

SHE HAD BEEN TORTURED
AND HER BLOOD USED TO
CREATE THE TECHNOLOGY
MEANT TO EXPOSE AND
DESTROY US.

A Skrull family consisting of a man, a woman, and a child are gathered around a body lying on a table. They appear to be tending to the body with concern. In the background, a Skrull soldier in a helmet is visible, and a wall shows signs of blood splatters.

PROJECT
BLOSSOM GREW
FROM IVY'S PAIN.

On the left, a large, dead, green, scaly creature (Moloth) lies on the ground. On the right, a close-up of a Skrull woman's face shows her in a state of deep grief, with her mouth open as if crying.

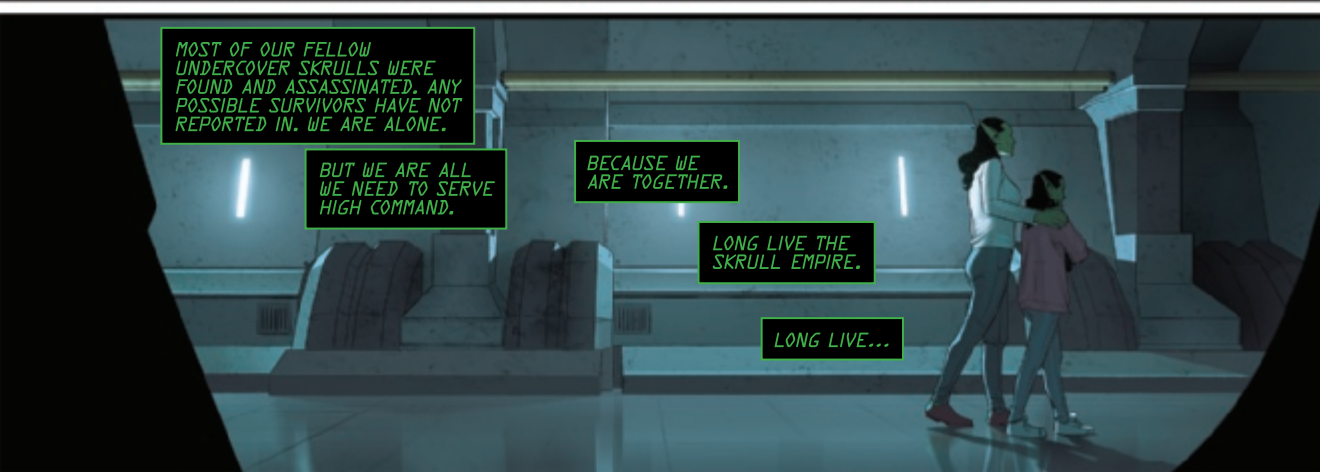
WE FOUND AND
TERMINATED
MOLOTH.

The Skrull family is walking through a desolate, rocky landscape. The ground is covered in blood and the remains of other creatures. The family consists of a man, a woman, and a child, all looking somber.

WHILE IVY CONTINUES TO
RECOVER, OUR FAMILY
RETURNED TO ITS MISSION.

WE WILL FIND THE
MONSTERS TRYING
TO EXPOSE SKRULLS
HIDDEN ON EARTH.

AND DESTROY
THEM.

The Skrull family is walking away from the viewer down a long, dimly lit hallway. The walls are metallic and have some glowing light fixtures. The family is huddled together, looking back over their shoulders.

MOST OF OUR FELLOW
UNDERCOVER SKRULLS WERE
FOUND AND ASSASSINATED. ANY
POSSIBLE SURVIVORS HAVE NOT
REPORTED IN. WE ARE ALONE.

BUT WE ARE ALL
WE NEED TO SERVE
HIGH COMMAND.

BECAUSE WE
ARE TOGETHER.

LONG LIVE THE
SKRULL EMPIRE.

LONG LIVE...



...MY FAMILY.

FILING A FIELD REPORT? AGAIN? WHY DO YOU BOTHER, MOM?

ORDERS ARE ORDERS, IVY.

MADISON, ALICE--IS THE LAB SECURE?



LAB WAS EMPTY, SO IT WAS PRETTY EASY TO SECURE.

IT WASN'T COMPLETELY EMPTY, MADISON.

MOM, YOU NEED TO SEE THIS.



READINGS INDICATE A LIFE-FORM THAT WORKED IN THIS LAB WAS NOT HUMAN.

THEY WERE KREE.

AND THEY WERE STUDYING *THIS* SAMPLE. IT WASN'T PART OF PROJECT BLOSSOM. IT'S SOMETHING THEY FOUND IN THE FIELD RECENTLY.



IS THAT...IS THAT WHAT I THINK IT IS...?

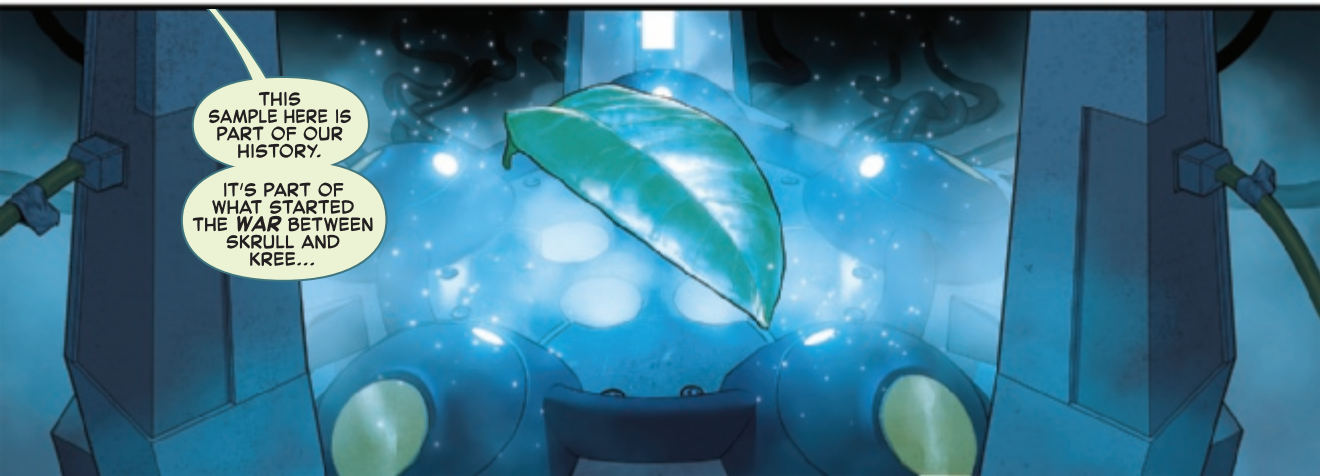
WAIT. WHAT IS IT?

YOU NEVER DO YOUR HOMEWORK--HUMAN OR SKRULL.

SHUT UP, ALICE.


THIS IS WHAT I GET FOR RAISING MY CHILDREN ON EARTH.

ALICE IS RIGHT, MADISON.



THIS SAMPLE HERE IS PART OF OUR HISTORY.

IT'S PART OF WHAT STARTED THE WAR BETWEEN SKRULL AND KREE...



"THE SKRULL EMPIRE WASN'T ALWAYS KNOWN FOR THEIR MILITARY MIGHT AND DOMINANCE."


"THEY WERE **PACIFISTS**, RIGHT, MOMMA?"

"WHAT?"

"HARD TO BELIEVE, MADISON, I KNOW."

"BUT IVY IS RIGHT."

"WE WERE A **PEACEFUL** PEOPLE ONCE. AND WITH THE CREATION OF INTER-STELLAR SPACE TRAVEL..."



"...EMPEROR DORREK THE FIRST TRAVELED THE UNIVERSE TO EXPAND THE SKRULL EMPIRE."

"HE CONQUERED EACH PLANET NOT THROUGH BATTLE, BUT THROUGH **TRADE**."

"DORREK OFFERED SKRULL TECHNOLOGY IN EXCHANGE FOR RESOURCES AND FEALTY."

"EVERY PLANET HE ENCOUNTERED **PEACEFULLY** BECAME PART OF THE SKRULL EMPIRE."



"UNTIL HIS JOURNEY BROUGHT HIM TO **HALA**, HOMEWORLD OF..."

"...THE
KREE.

"THEY WERE EVEN
MORE BARBARIC
AND SAVAGE THAN
THEY ARE NOW.

"AND THEY WERE
LED BY A BRUTE
NAMED **MORAG.**

"BUT THEY WERE
NOT THE ONLY
SPECIES ON HALA..."

"...THE **COTATI**
HAD EVOLVED
THERE AS WELL.

"A PLANT SPECIES
THAT LIVED IN
HARMONY WITH THEIR
ENVIRONMENT. THEY
COMMUNICATED
VIA TELEPATHY.

"AND THEY
WERE
PEACEFUL
LIKE THE
SKRULLS.

"IN ORDER TO DETERMINE
THE DOMINANT SPECIES
ON HALA--AND HIS NEW
TRADING PARTNERS--
EMPEROR DORREK
PROPOSED A **CONTEST.**

"HE TRANSPORTED A PARTY
FROM EACH SPECIES TO
ISOLATED MOONS.

"EACH WOULD BE
'ARMED' WITH THE BEST
OF SKRULL TECHNOLOGY.

"AFTER ONE YEAR IN ISOLATION,
WHOEVER HAD CREATED THE MOST
WITH THE GIFTS THEY WERE GIVEN
WOULD BE DEEMED **RULER** OF HALA,
AND THEN THE PLANET WOULD BE
WELCOMED INTO THE SKRULL EMPIRE.