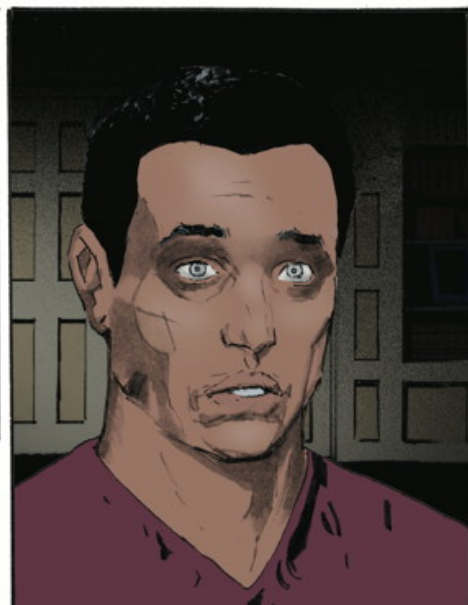




GLENN  
FABRY  
2016  
ADAM  
BROWN









SHADOW WAS IN A DARK PLACE.

CHANGES ARE COMING. THERE ARE CERTAIN DECISIONS TO BE MADE.

WHERE AM I?

IN THE EARTH AND UNDER THE EARTH.

YOU ARE WHERE THE FORGOTTEN WAIT.



IF YOU ARE TO SURVIVE, YOU MUST BELIEVE.

BELIEVE WHAT? WHAT SHOULD I BELIEVE?



THEN HE DOZED ONCE MORE AND DREAMED HE WAS BACK IN PRISON.

SOMEONE HAS PUT OUT A CONTRACT ON YOUR LIFE.



BUT SHADOW COULD NOT FIND OUT WHO OR WHY, AND WHEN HE WOKE UP THEY WERE COMING IN FOR A LANDING.



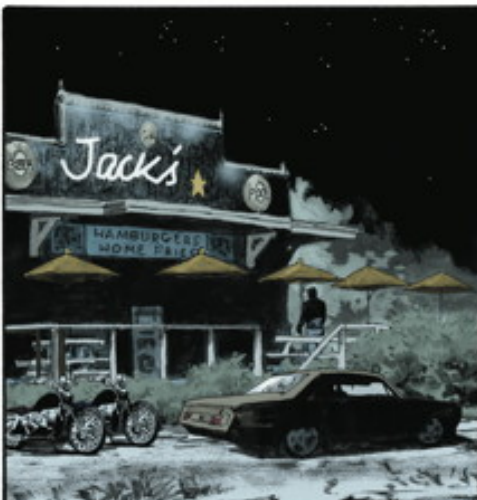


EAGLE POINT WAS TWO HUNDRED AND FIFTY MILES AWAY. HE DROVE NORTH FOR AN HOUR AND A HALF. IT WAS GETTING LATE AND HE WAS HUNGRY.

WHERE'S THE BEST BAR IN THE AREA? SOMEWHERE I CAN GET SOMETHING TO EAT.

JACK'S CROCODILE BAR. JACK'S A CHARACTER... GOT A COUPLE OF CROCS, A SNAKE... ONE A THEM BIG LIZARD THINGS.

WEST ON COUNTY ROAD N.



WHAT'LL IT BE?

HOUSE BEER AND A HAMBURGER WITH ALL THE TRIMMINGS.

BOWL OF CHILI TO START? BEST CHILI IN THE STATE.

SOUNDS GOOD, WHERE'S THE RESTROOM?

