

IT SURE WAS NICE OF THE FILMMAKERS TO GET US A V.I.P. VISIT TO THE SET OF SCOOBY-DOO'S FAVORITE MOVIE FRANCHISE!

LIKE, NOT JUST SCOOBY'S, DAPHNE...



...THE ORIGINAL STAR: DOG RANGER WAS THE FIRST MOVIE HE AND I EVER SAW TOGETHER! WE WENT TO ALL THE SEQUELS.

RHEAH! EVEN THE BAD ONES!



THE STUDIO IS REALLY HOPING THIS REBOOT MAKES STAR A HOUSEHOLD NAME AGAIN.

THAT'S RIGHT, VELMA. I READ THEY HAVE PLANS TO BUILD A WHOLE MOVIE UNIVERSE OUT OF STAR AND HIS FRIENDS.

WE DID, FRED, BUT I'M AFRAID...



...THE UNIVERSE IS DOOMED!

RUH-ROH.

THE BLACK KNIGHT

RETURNS

WRITER IVAN COHEN PENCILS WALTER CARZON INKS HORACIO OTTOLINI
COLORS SILVANA BRYIS LETTERER SAIDA TEMOFONTE
COVER CARZON & OTTOLINI WITH BRYIS EDITOR JIM CHADWICK



I'M EVAN PEARL, EXECUTIVE PRODUCER OF THE NEW STAR MOVIE. AND THIS...



...IS THE STAR ITSELF! SCOOBY-DOO, MEET "ANDY CIRCUITS."

I'M GLAD YOU'RE IN THE UNIVERSE, CITIZEN.

RHO WAY!



WHAT DID YOU MEAN BY "DOOMED"?

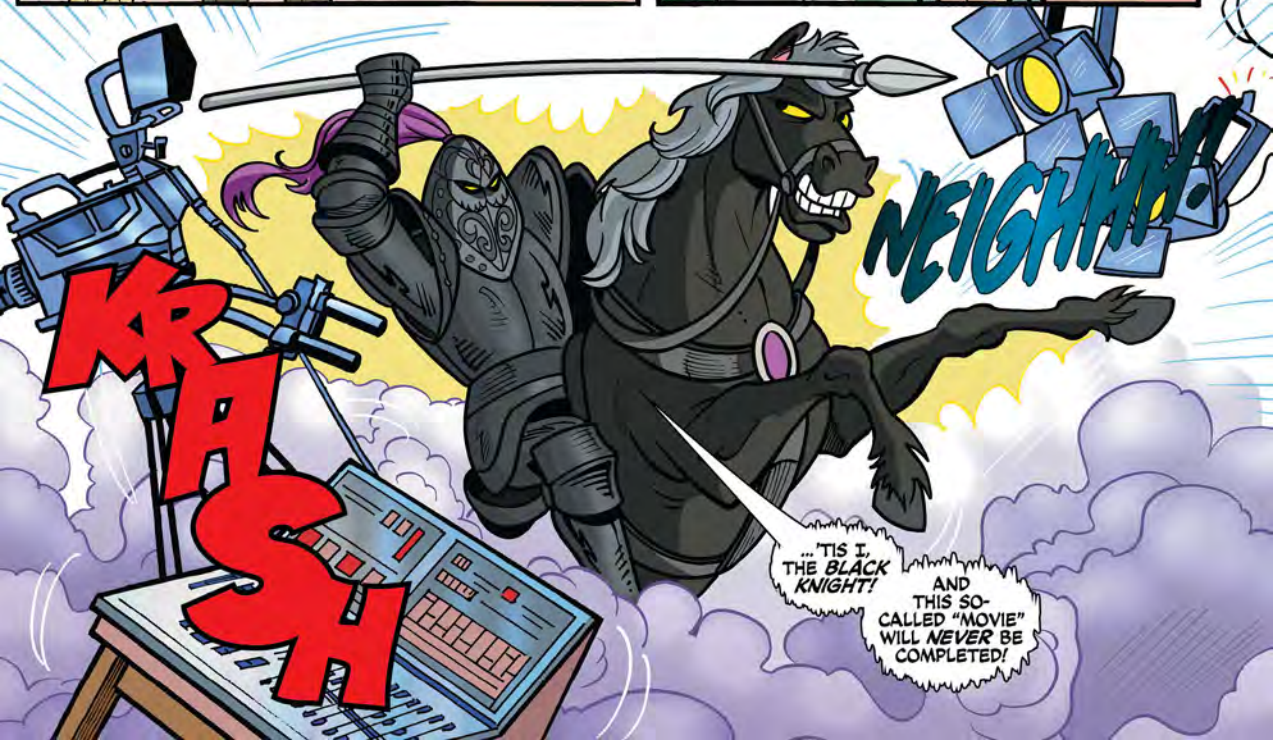
WELL, WE'VE BEEN KEEPING IT OUT OF THE PRESS, BUT THE PRODUCTION IS...



...HAUNTED.

H-H-HAUNTED? LIKE, BY WHO?

I CAN ANSWER THAT, KNAVE...



KRASH

NEIGH!!!

'TIS I, THE BLACK KNIGHT! AND THIS SO-CALLED "MOVIE" WILL NEVER BE COMPLETED!

MUNCH
MUNCH
SLURP!

SOMEBODY
TURN ON THE
LIGHTS!

LIKE
PASS THE
MUST--

--ARD.

UH, LIKE,
LOOK WHAT
WE...UH,
FOUND!

RAFT
RERVICES!



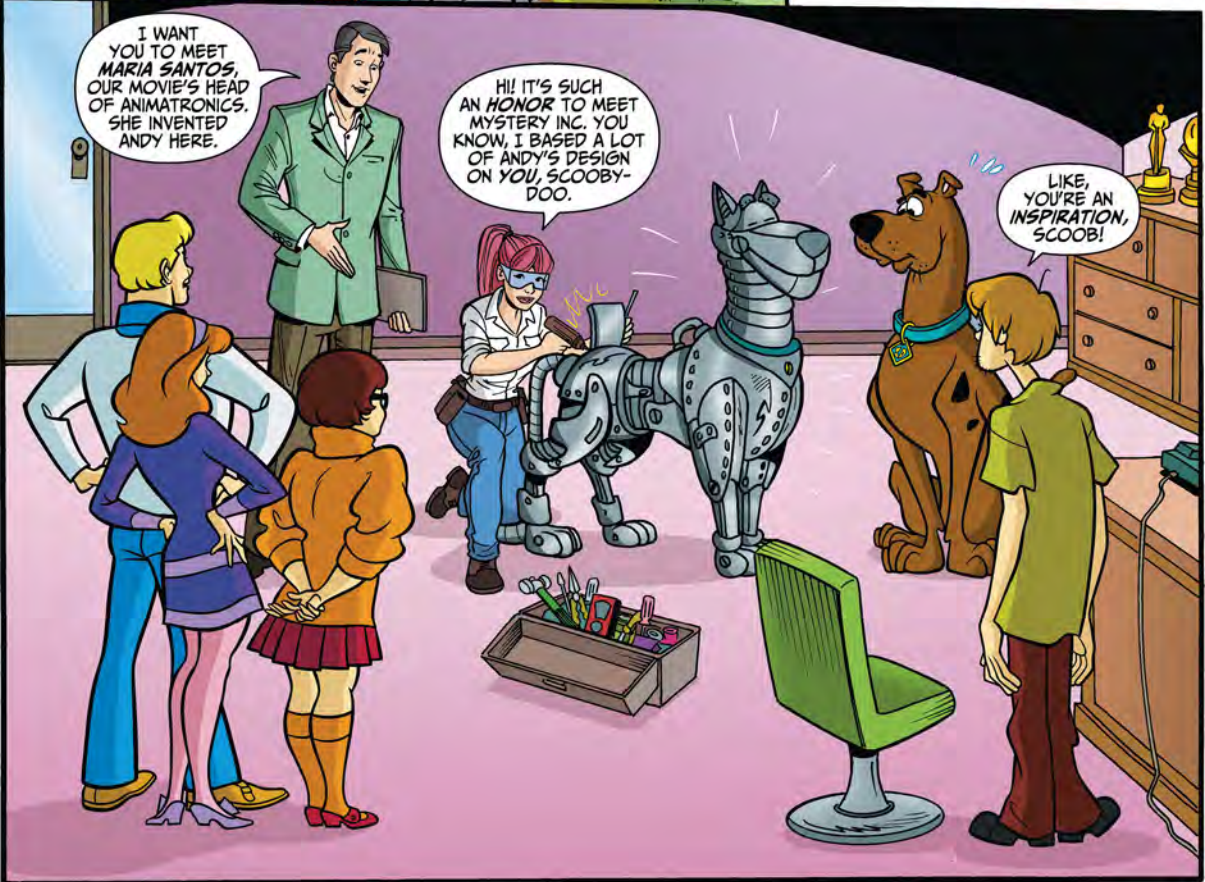
I'M SURE
THE CREW WILL BE
THRILLED THAT YOU'VE
MANAGED TO KEEP
THEIR FOOD MOSTLY
SAFE, GUYS.

BUT I THINK
MR. PEARL WANTS
TO TELL US ABOUT THE
MORE PRESSING
PROBLEM FACING
PRODUCTION.



THAT'S RIGHT, VELMA.
IF YOU CAN'T STOP
THESE BLACK KNIGHT
ATTACKS, WE'LL HAVE
TO SHUT THE MOVIE
DOWN.

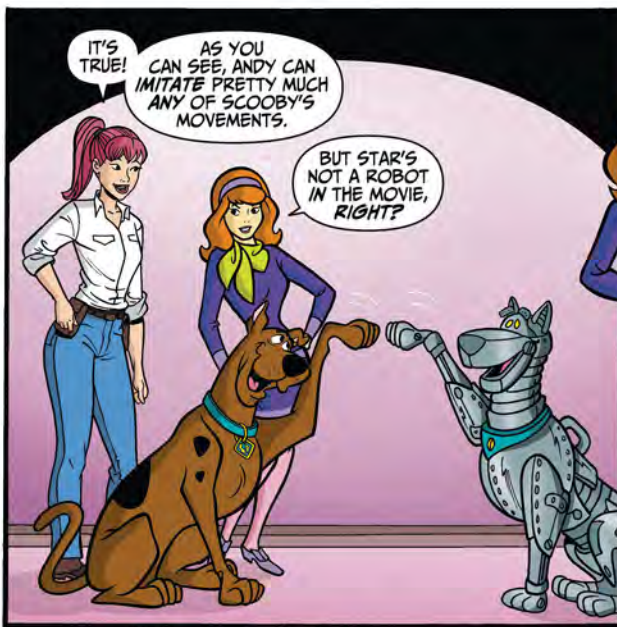
DOZENS
OF PEOPLE
WOULD
LOSE THEIR
JOBS!



I WANT
YOU TO MEET
MARIA SANTOS,
OUR MOVIE'S HEAD
OF ANIMATRONICS.
SHE INVENTED
ANDY HERE.

HI! IT'S SUCH
AN HONOR TO MEET
MYSTERY INC. YOU
KNOW, I BASED A LOT
OF ANDY'S DESIGN
ON YOU, SCOOBY-
DOO.

LIKE,
YOU'RE AN
INSPIRATION,
SCOOB!



IT'S TRUE!

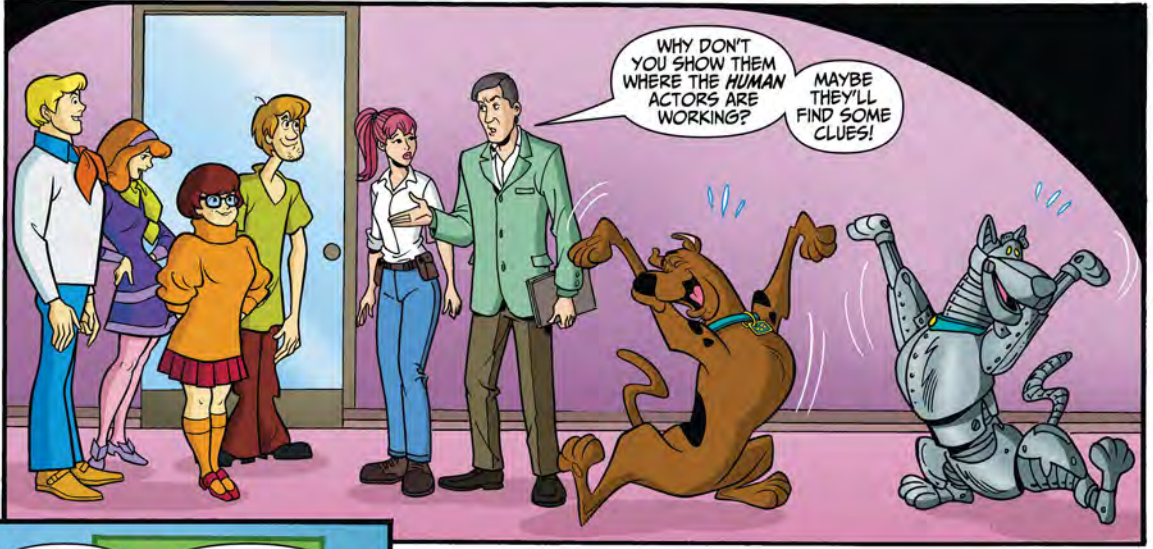
AS YOU CAN SEE, ANDY CAN IMITATE PRETTY MUCH ANY OF SCOOBY'S MOVEMENTS.

BUT STAR'S NOT A ROBOT IN THE MOVIE, RIGHT?



RIGHT! IN THE MOVIE, STAR'S A SPACE DOG. WE'LL USE COMPUTER EFFECTS TO GIVE ANDY A REAL DOG'S FACE AND MOUTH MOVEMENTS.

IT'S THE SAME WAY WE ADD OUTER-SPACE BACKGROUNDS, ALL OF IT AFTER FILMING'S DONE.



WHY DON'T YOU SHOW THEM WHERE THE HUMAN ACTORS ARE WORKING?

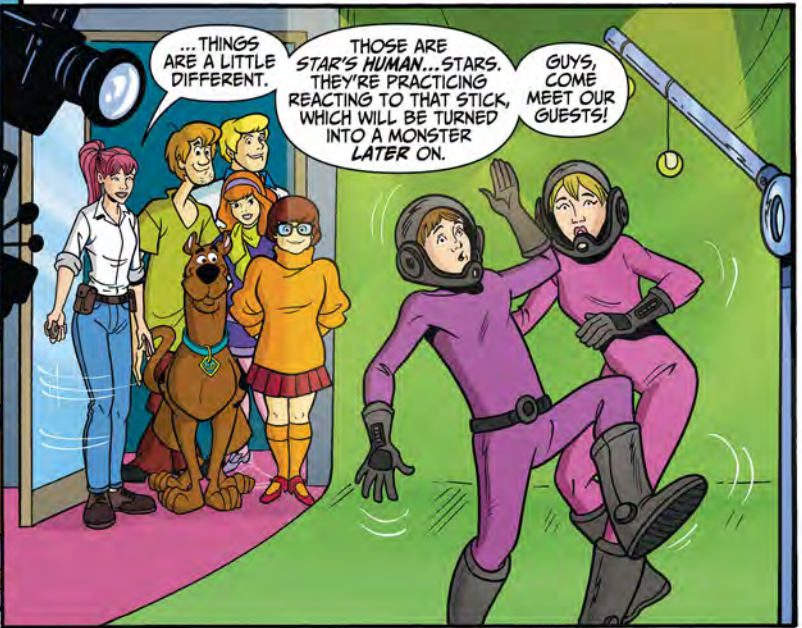
MAYBE THEY'LL FIND SOME CLUES!



JINKIES, MR. PEARL SEEMS PRETTY UPSET!

WELL, HE AND HIS PARTNERS PUT A LOT OF MONEY INTO THIS. THEY LOVED THE ORIGINAL AND WANT TO BRING IT TO A NEW AUDIENCE.

THAT'S WHY THEY'RE USING ANDY AND OTHER MODERN EFFECTS. DID YOU KNOW THE FIRST STAR WAS A HUMAN ACTOR IN A DOG SUIT? TODAY...



... THINGS ARE A LITTLE DIFFERENT.

THOSE ARE STAR'S HUMAN... STARS. THEY'RE PRACTICING REACTING TO THAT STICK, WHICH WILL BE TURNED INTO A MONSTER LATER ON.

GUYS, COME MEET OUR GUESTS!



WOW, IT REALLY IS MYSTERY INC.! I'M ZEV, AND THIS IS LAUREN.

ARE YOU GUYS GOING TO FIND THE BLACK KNIGHT?



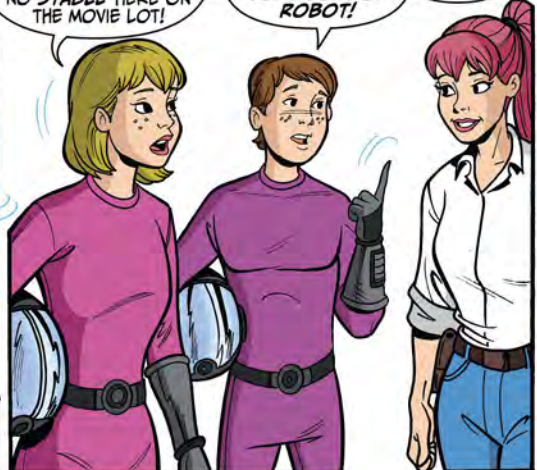
YOU'VE SEEN HIM, TOO?

WE ALL HAVE. THE ONLY DIFFERENCE IS I THINK HE'S A GHOST AND ZEV DOESN'T.

I MEAN, THE KNIGHT DISAPPEARS WITHOUT A TRACE ALONG WITH HIS HORSE! AND THERE'S NO STABLE HERE ON THE MOVIE LOT!

THE KNIGHT IS SO STIFF, I THINK HE'S SOME SORT OF ROBOT!

ER, NO OFFENSE, MARIA.



NONE TAKEN. I'M SURE ANDY DOESN'T MIND EITHER.

I HOPE YOU CAN SOLVE THE MYSTERY BEFORE THEY SHUT US DOWN. WE'RE SUPPOSED TO BE IN THE SEQUEL!

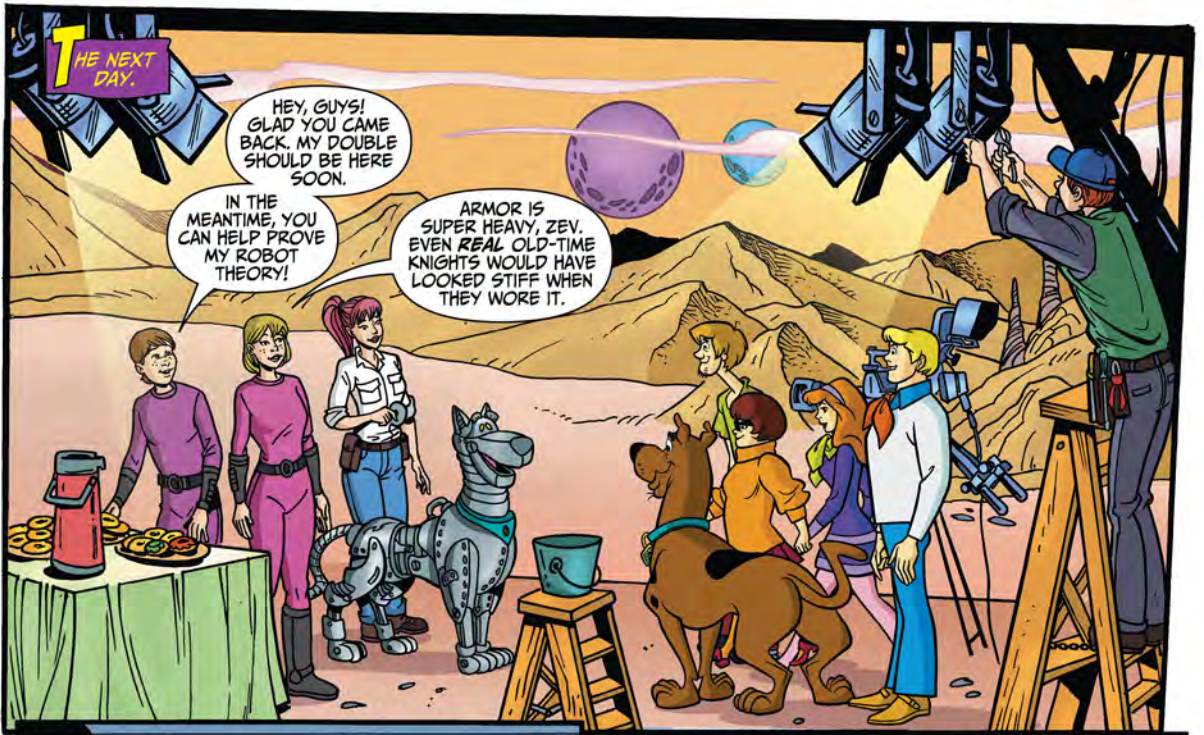
THERE'S ALREADY A SEQUEL PLANNED?



NOT ONLY A SEQUEL, BUT WE EACH HAVE A SPIN-OFF LINED UP AS PART OF "STAR: DOG RANGER PRESENTS"!

MY MOM MADE ME TURN DOWN A LITTLE INDEPENDENT MOVIE FOR THIS FRANCHISE BECAUSE IT'S SUCH A SURE THING.

MY STUNT DOUBLE WORKED ON THE ORIGINAL STAR BACK IN THE DAY AND SAYS IT WAS NOTHING LIKE THIS. YOU GUYS SHOULD MEET HIM.



THE NEXT DAY.

HEY, GUYS! GLAD YOU CAME BACK. MY DOUBLE SHOULD BE HERE SOON.

IN THE MEANTIME, YOU CAN HELP PROVE MY ROBOT THEORY!

ARMOR IS SUPER HEAVY, ZEV. EVEN REAL OLD-TIME KNIGHTS WOULD HAVE LOOKED STIFF WHEN THEY WORE IT.

LAUREN MAKES A LOT OF SENSE, ZEV.

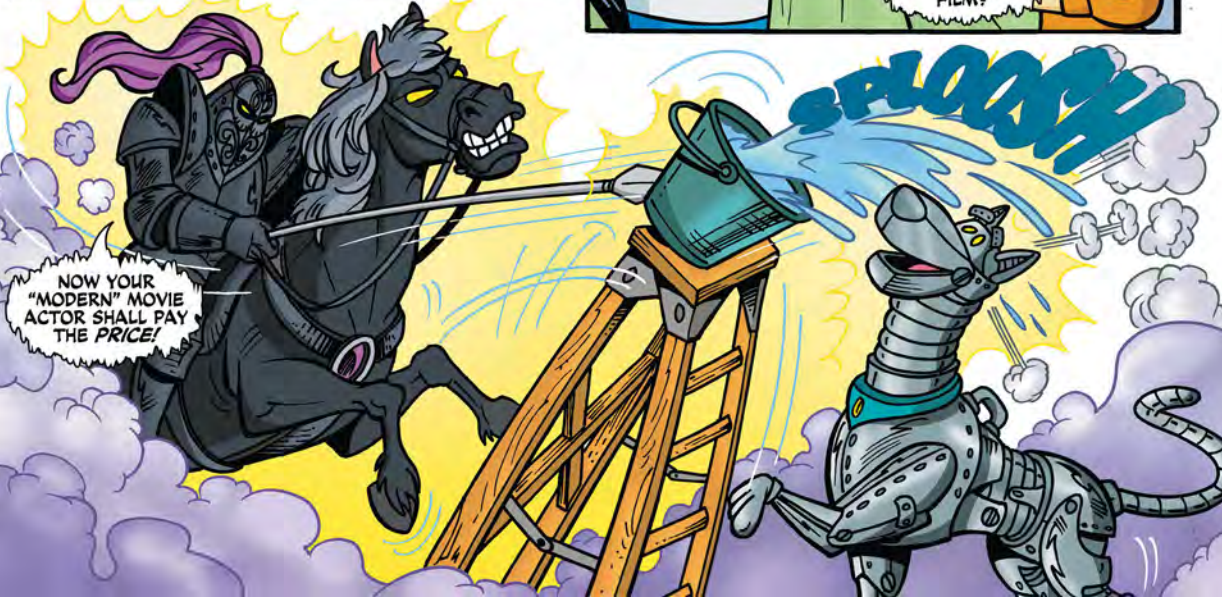
BUT IF HE WAS SO HEAVY, HOW COULD THE HORSE DISAPPEAR SO FAST?

MAYBE THE HORSE IS ALSO SOME SORT OF ROBOT?

YOU'RE NOT TAKING ZEV'S ROBOT THEORY SERIOUSLY, ARE YOU?

NOT EXACTLY, BUT LET'S SEE WHAT ZEV'S DOUBLE HAS TO S--

YOU DARE CONTINUE THIS ACCURSED FILM?



NOW YOUR "MODERN" MOVIE ACTOR SHALL PAY THE PRICE!

SPLASH!