




2 GRAPHIC NOVELS BY STEFAN PETRUCHA & SHO MURASE

Nancy Drew DIARIES™

*The Demon of
River Heights
Writ in Stone*

BASED ON THE SERIES BY
CAROLYN KEENE

PAPERCUT™ 

A comic book illustration of Nancy Drew hanging from a large, gnarled tree branch. She is upside down, with her legs and arms outstretched. She has long brown hair and is wearing a black top and a brown skirt. The background shows a blue sky with white clouds and some small brown objects falling.

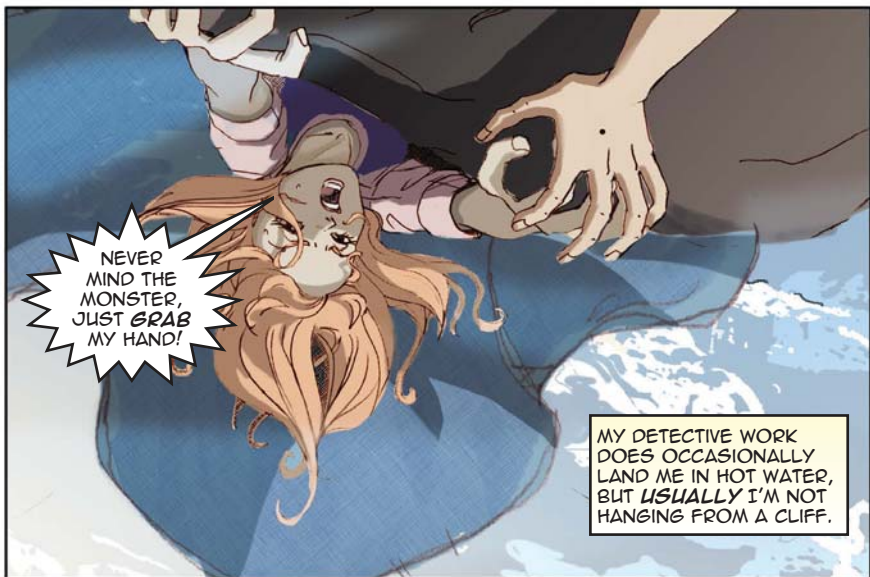
HI. THAT'S ME, **NANCY DREW**,
THE DANGLING ONE. I'M CON-
SIDERED KIND OF A DETECTIVE
HERE IN RIVER HEIGHTS.

THE CUTE GUY TRYING
TO SAVE ME IS **NED
NICKERSON**. WE'VE BEEN
SEEING EACH OTHER
SINCE JUNIOR HIGH.

THE
MONSTER...
HE'S REAL!
I SAW IT!
IT WAS...

NOT ONLY IS HE
GOOD-LOOKING
AND SMART, HE CAN
MOVE PRETTY **FAST**
WHEN HE NEEDS TO!

**THE
DEMON
OF RIVER
HEIGHTS**



NEVER
MIND THE
MONSTER,
JUST GRAB
MY HAND!

MY DETECTIVE WORK
DOES OCCASIONALLY
LAND ME IN HOT WATER,
BUT USUALLY I'M NOT
HANGING FROM A CLIFF.



AAAAAAAAHHH!

SOMETIMES IT'S
A LIGHTHOUSE...



OR THE TOWER ROOM
OF A HAUNTED
MANSION...



AAAAHHH!

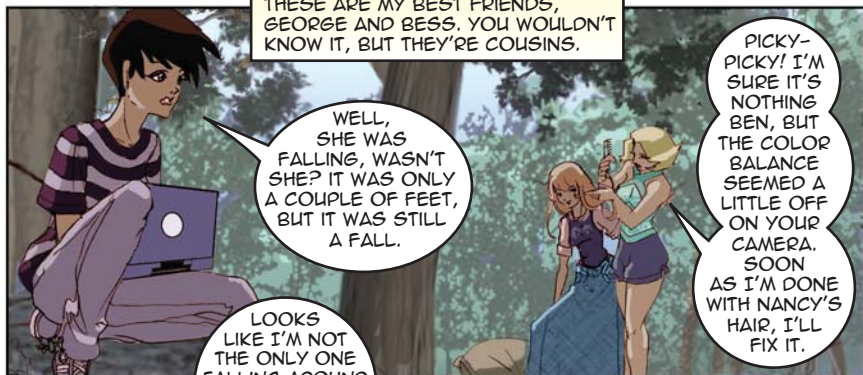
OR WORSE...



CUT!

BUT THIS TIME,
IT'S JUST MY
ACTING DEBUT!

PERFECT
SCREAM!
I'D SWEAR YOU
WERE REALLY
FALLING!



THESE ARE MY BEST FRIENDS,
GEORGE AND BESS. YOU WOULDN'T
KNOW IT, BUT THEY'RE COUSINS.

WELL,
SHE WAS
FALLING, WASN'T
SHE? IT WAS ONLY
A COUPLE OF FEET,
BUT IT WAS STILL
A FALL.

LOOKS
LIKE I'M NOT
THE ONLY ONE
FALLING AROUND
HERE. THEY'RE
BOTH PRETTY
TAKEN WITH
BESS.

PICKY-
PICKY! I'M
SURE IT'S
NOTHING
BEN, BUT
THE COLOR
BALANCE
SEEMED A
LITTLE OFF
ON YOUR
CAMERA.
SOON
AS I'M DONE
WITH NANCY'S
HAIR, I'LL
FIX IT.



I THINK IT'S
SO EXCITING
YOU GUYS HAVE COME
HERE TO MAKE YOUR
STUDENT FILM!

YEAH,
SHE'S ALREADY
INVITED THEM TO
MEET US AT THE
COFFEE SHOP IN
AN HOUR.

BUT HOURS LATER, THE BOYS STILL HAVEN'T SHOWN, AND **NO ONE'S** SEEN THEM! UNFORTUNATELY THE SAME CAN'T BE SAID FOR MY OLD NEMESIS **DEIRDRE SHANNON**...

WELL, WELL!
IF IT ISN'T THE
BLONDE LEADING
THE BLAND!

SHE'S NOT **SO**
BAD, IF YOU'RE
REALLY INTO VAIN,
ANGRY PEOPLE.

THIS IS
TODD ANGLE.
HE'S THE SON
OF CANTON
ANGLEY II,
AN
ENTREPRENEUR
WHO RECENTLY
HIRED MY
FATHER TO
HANDLE HIS NEW
INVESTMENTS
HERE IN RIVER
HEIGHTS.

DEEDEE'S
DADDY GOT A
BIG CLIENT **INSTEAD**
OF CARSON DREW? NOW
THAT'S SUSPICIOUS!

I COULDN'T
BELIEVE IT!
WHEN DEIRDRE
LEFT, I PUT IN
A QUICK CALL
HOME!

DAD! DID
YOU **REALLY**
LOSE A CLIENT
TO MR. SHANNON?

WELL, SOME
OF THE THINGS
MR. ANGLEY ASKED
ME TO DO WERE
QUESTIONABLE,
SO I TURNED HIM
DOWN.

I'D LIKE YOU
TO KEEP AN EYE ON
MR. ANGLEY'S SON, TODD,
SEE IF YOU NOTICE
ANYTHING PECULIAR!

I'M ON IT!

UH... NANCE,
YOU'RE ALSO
ON THE KETCHUP.
ICHH!

BLAP!