

SHATTERED EMPIRE

Part III

The Emperor is dead, as is his most fearsome agent, Darth Vader. Yet scattered Imperial forces remain intact, loyal to the Galactic Empire, still willing and able to do the bidding of its master.

Lieutenant SHARA BEY and her husband, Sergeant KES DAMERON, have been with the Rebel Alliance since before the Battle of Hoth. Their time together has been rare and precious, and they once more find themselves separated by duty.

Under the command of General Han Solo, Dameron has been deployed with his commando group, the Pathfinders, in ongoing combat operations against the shattered Empire. Meanwhile, Shara Bey has been assigned a light duty, acting as pilot and escort for Princess Leia Organa in an attempt to find allies for the fledgling New Republic. It is this that has brought Bey and Organa to NABOO, the Emperor's homeworld.

They are about to discover precisely how far Palpatine will go to protect his secrets....

GREG RUCKA
Writer

**MARCO CHECCHETTO &
ANGEL UNZUETA**
Artists

ANDRES MOSSA
Colors

MARCO CHECCHETTO
Cover

VC's JOE CARAMAGNA
Letterer

HEATHER ANTOS
Assistant Editor

JORDAN D. WHITE
Editor

**C.B.
CEBULSKI**
Executive Editor

**AXEL
ALONSO**
Editor In Chief

**JOE
QUESADA**
Chief Creative Officer

**DAN
BUCKLEY**
Publisher

For Lucasfilm:

Creative Director MICHAEL SIGLAIN
Senior Editor FRANK PARISI
**Lucasfilm Story Group RAYNE ROBERTS, PABLO HIDALGO,
LELAND CHEE**



JOURNEY TO STAR WARS: THE FORCE AWAKENS - SHATTERED EMPIRE No. 3, December 2015. Published Monthly except in October by MARVEL WORLDWIDE, INC., a subsidiary of MARVEL ENTERTAINMENT, LLC. OFFICE OF PUBLICATION: 135 West 50th Street, New York, NY 10020. BULK MAIL POSTAGE PAID AT NEW YORK, NY AND AT ADDITIONAL MAILING OFFICES. STAR WARS and related text and illustrations are trademarks and/or copyrights, in the United States and other countries, of Lucasfilm Ltd. and/or its affiliates. © & TM Lucasfilm Ltd. No similarity between any of the names, characters, persons, and/or institutions in this magazine with those of any living or dead person or institution is intended, and any such similarity which may exist is purely coincidental. Marvel and its logos are TM Marvel Characters, Inc. \$3.99 per copy in the U.S. (GST #R127032852) in the direct market; Canadian Agreement #40668537. Printed in the USA. Subscription rate (U.S. dollars) for 12 issues: U.S. \$26.99; Canada \$42.99; Foreign \$42.99. POSTMASTER: SEND ALL ADDRESS CHANGES TO JOURNEY TO STAR WARS: THE FORCE AWAKENS - SHATTERED EMPIRE, C/O MARVEL SUBSCRIPTIONS P.O. BOX 727 NEW HYDE PARK, NY 11040. TELEPHONE # (888) 511-5480. FAX # (347) 537-2649. subscriptions@marvel.com. ALAN FINE, President, Marvel Entertainment; DAN BUCKLEY, President, TV, Publishing and Brand Management; JOE QUESADA, Chief Creative Officer; TOM BREVOORT, SVP of Publishing; DAVID BOGART, SVP of Operations & Procurement, Publishing; C.B. CEBULSKI, VP of International Development & Brand Management; DAVID GABRIEL, SVP of Print, Sales & Marketing; JIM O'KEEFE, VP of Operations & Logistics; DAN CARR, Executive Director of Publishing Technology; SUSAN CRESPI, Editorial Operations Manager; ALEX MORALES, Publishing Operations Manager; STAN LEE, Chairman Emeritus. For information regarding advertising in Marvel Comics or on Marvel.com, please contact Jonathan Rheingold, VP of Custom Solutions & Ad Sales, at jrheingold@marvel.com. For Marvel subscription inquiries, please call 888-511-5480. Manufactured between 09/18/2015 and 09/29/2015 by QUAD/GRAPHICS WASECA, WASECA, MN, USA.

Outer Rim.
The Wretch of Tayron.
Imperial Security
Bureau Black Site.

250.
0.



00 - 52

29750



I DUNNO, SAKAS.
IT'S A **SECRET** ISB
BASE WHERE THEY DO
UNSPEAKABLE
THINGS, SO...

TIME TO
EARN OUR
PAY.

ALL
CHARGES
SET.

STRIKE
LEADER TO
ALL TEAMS,
SOUND
OFF.



LIGHT
'EM UP ON MY
MARK, BOYS AND
GIRLS.



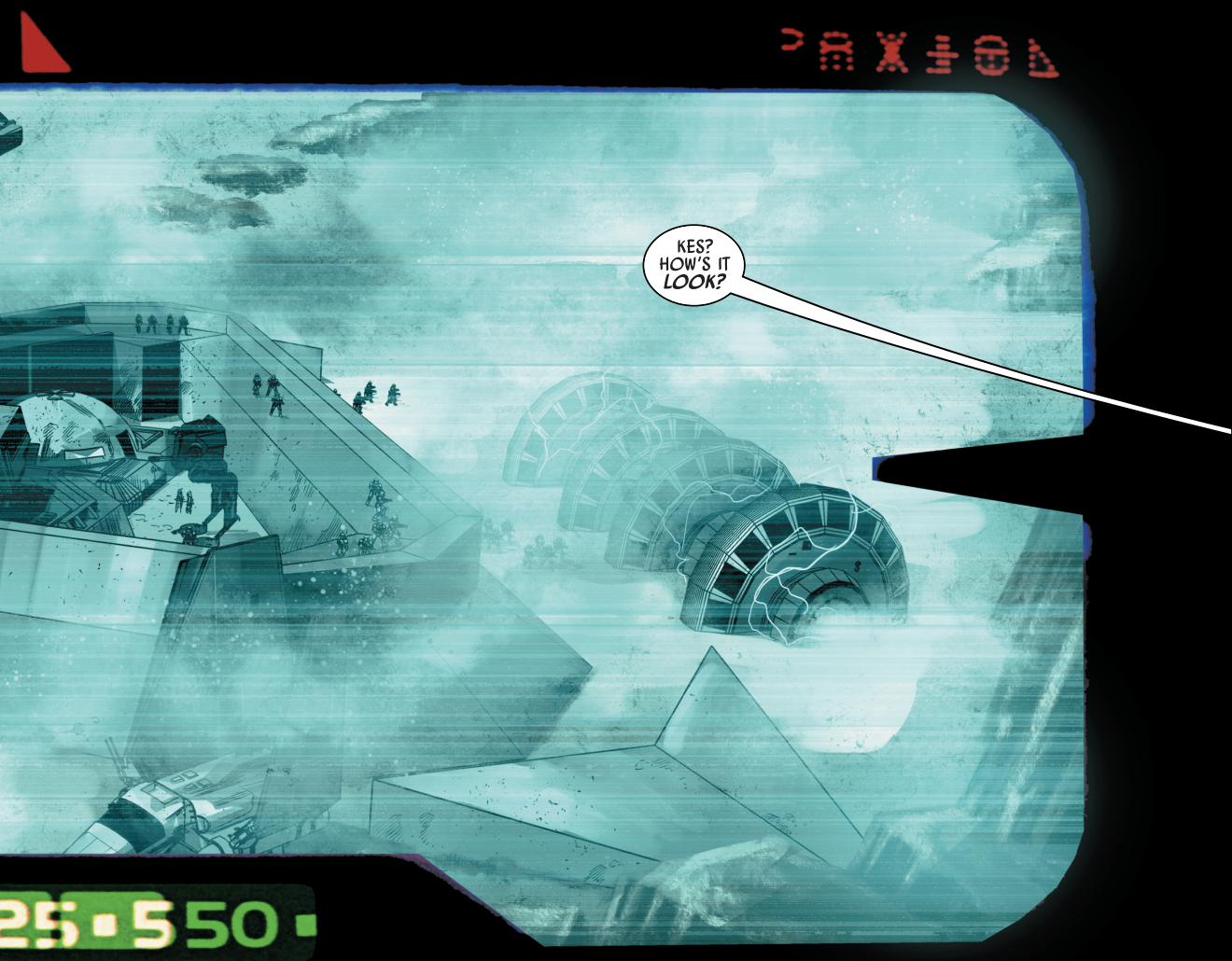
STRIKE
ONE, IN
POSITION.

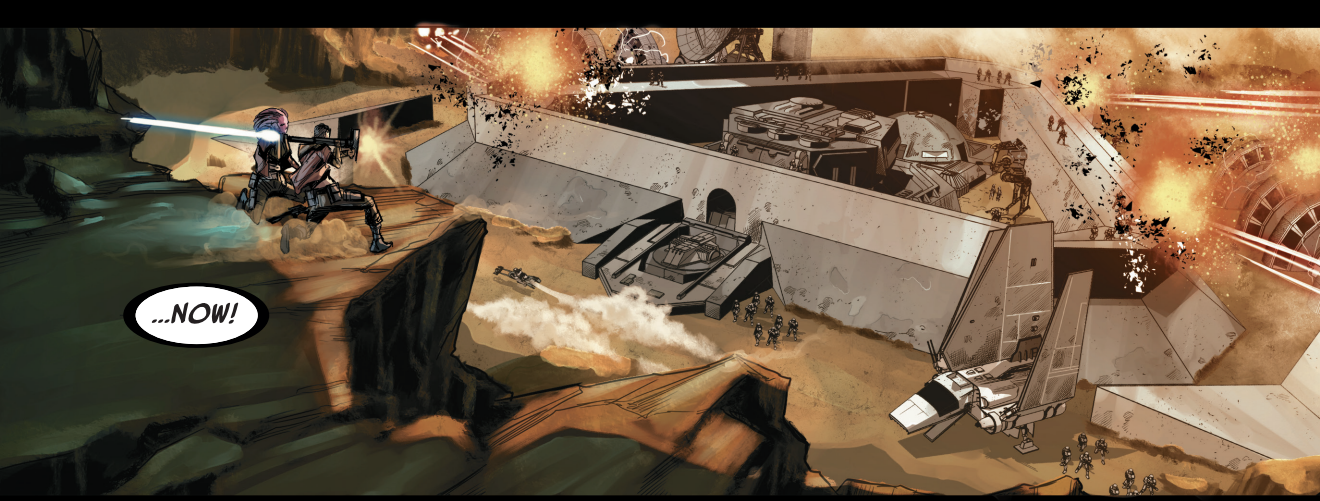
STRIKE
TWO, READY.

STRIKE
THREE,
STANDING
BY.

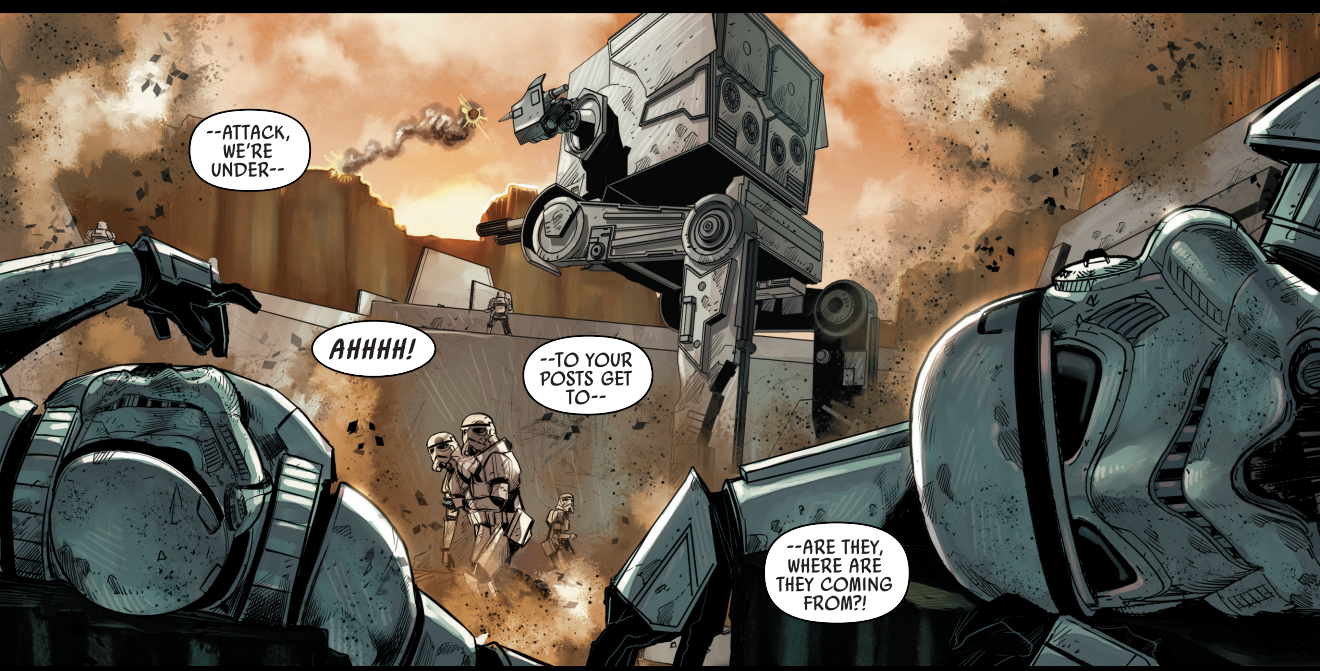
STRIKE
FOUR,
GOOD TO
GO.







...NOW!



--ATTACK, WE'RE UNDER--

AHHHH!

--TO YOUR POSTS GET TO--

--ARE THEY, WHERE ARE THEY COMING FROM?

