

# DEPT. of MONSTERology



RENNIE  
HOLDEN  
DENTON  
CAMPBELL

RENEGADE  
ART'S EDITION #111111

The  
Trouble  
With  
HARRY





The  
Troupe  
With  
**HARRY**

# DEPT of **MONSTERology**

**Script** by  
Gordon **Rennie**

**Art & Logo Design** by  
P J **Holden**

**Colors** by  
Steven **Denton**

**Lettering & Production** by  
Jim **Campbell**

**Edited** by  
Alexander **Finbow**

**Dept of Monsterology** Published By Renegade Arts Canmore Ltd  
Trading as Renegade Arts Entertainment Ltd

Office of Publication

Canada: 25 Prospect Heights, Canmore, Alberta, T1W 2S2, Canada

UK: 31 Hunters Mews, Fontwell Arundel, West Sussex, BN18 OUW, UK

Renegade Arts Entertainment Ltd and its logos are TM and copyright © 2013  
Renegade Arts Canmore Ltd

Dept of Monsterology story, characters and designs are copyright © 2013  
Renegade Arts Entertainment Ltd, Gordon Rennie and Paul Holden.

The characters and events depicted herein are purely fictional. Any similarity to actual  
persons whether living or dead is completely unintentional.

[www.renegadeartsentertainment.com](http://www.renegadeartsentertainment.com)

Renegade Arts Entertainment is Alexander Finbow, Doug Bradley, Alan Grant,  
John Finbow, Nick Wilson, Jennifer Taylor

**RENEGADE**  
ARTS ENTERTAINMENT



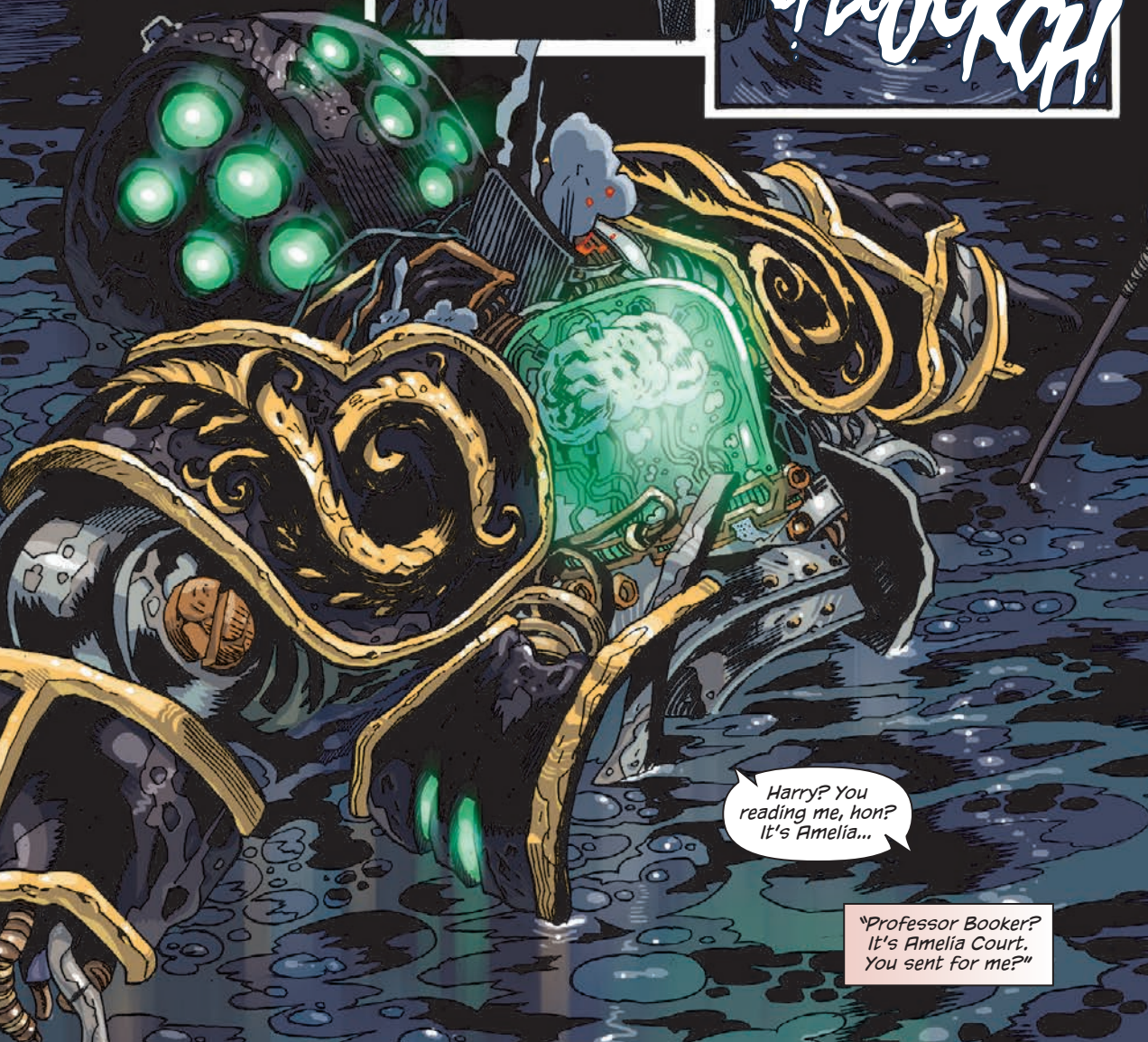
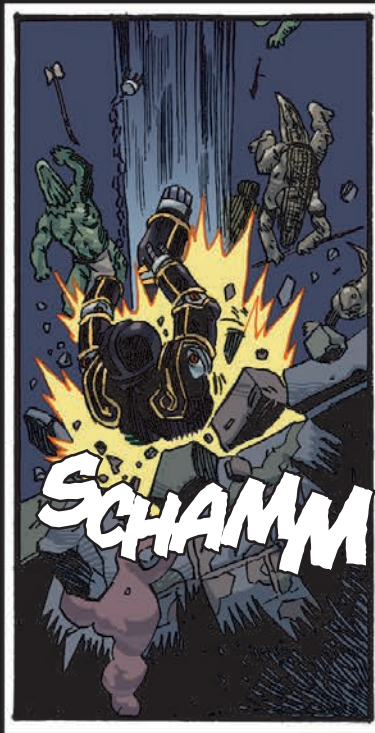
*The Caverns of Thule,  
northern Greenland, now:*



Harry?  
Where are  
you? You  
okay?







Harry? You  
reading me, hon?  
It's Amelia...

"Professor Booker?  
It's Amelia Court.  
You sent for me?"



Dunsany College,  
five years ago:

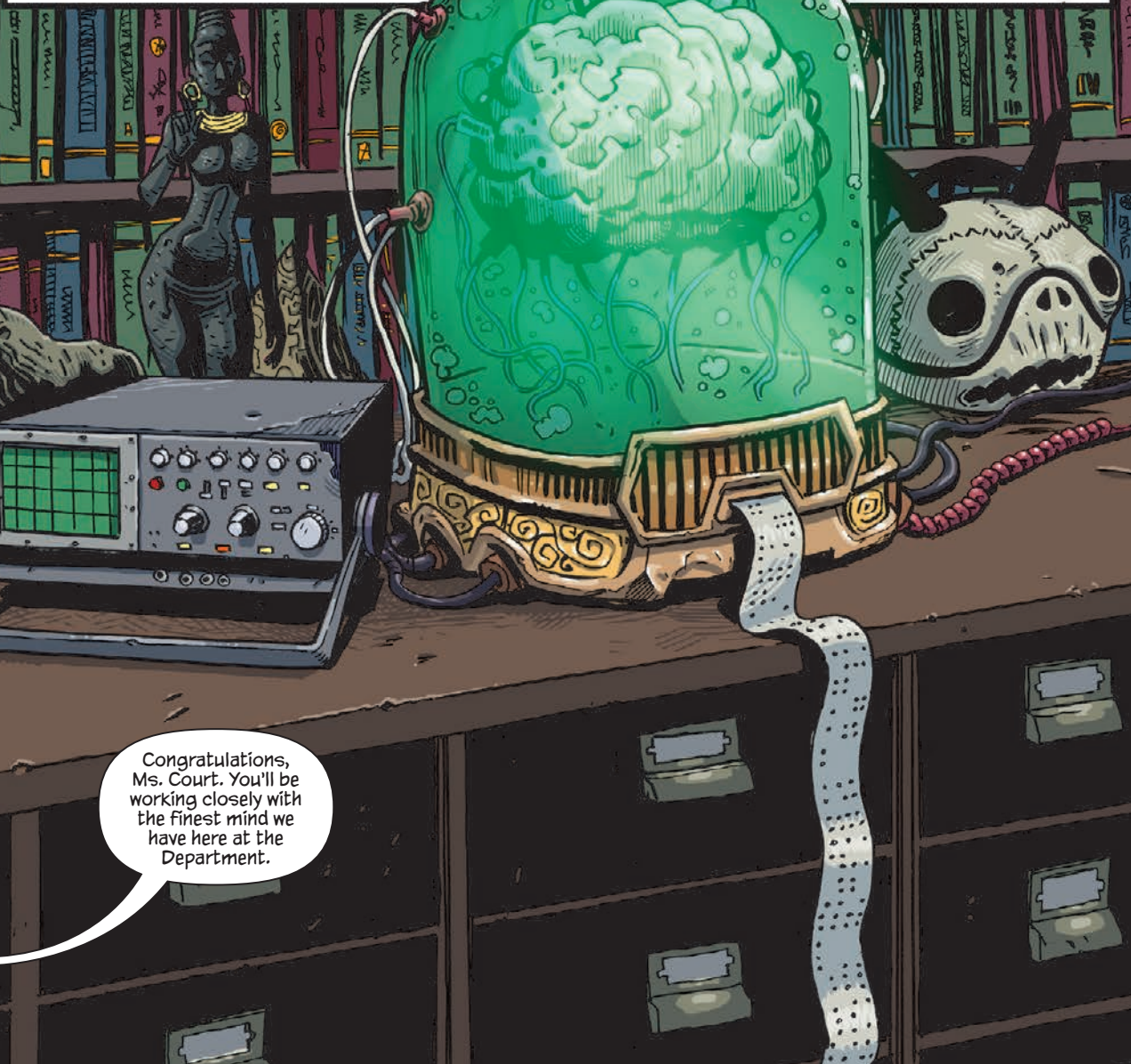
Ah, Ms. Court.  
Thank you for coming.  
You're cleared for working  
among some of the more  
sensitive material held  
here in the archives,  
aren't you?

Yes, ever  
since I worked with  
Professor Wilmington last  
semester, gathering archive  
material for his history of the  
Department's Antarctic  
expeditions.

It was a fascinating  
experience, and a  
real honour... ..even if I  
didn't actually get to  
meet Professor Wilmington  
in person. Or even speak to  
him on the phone.

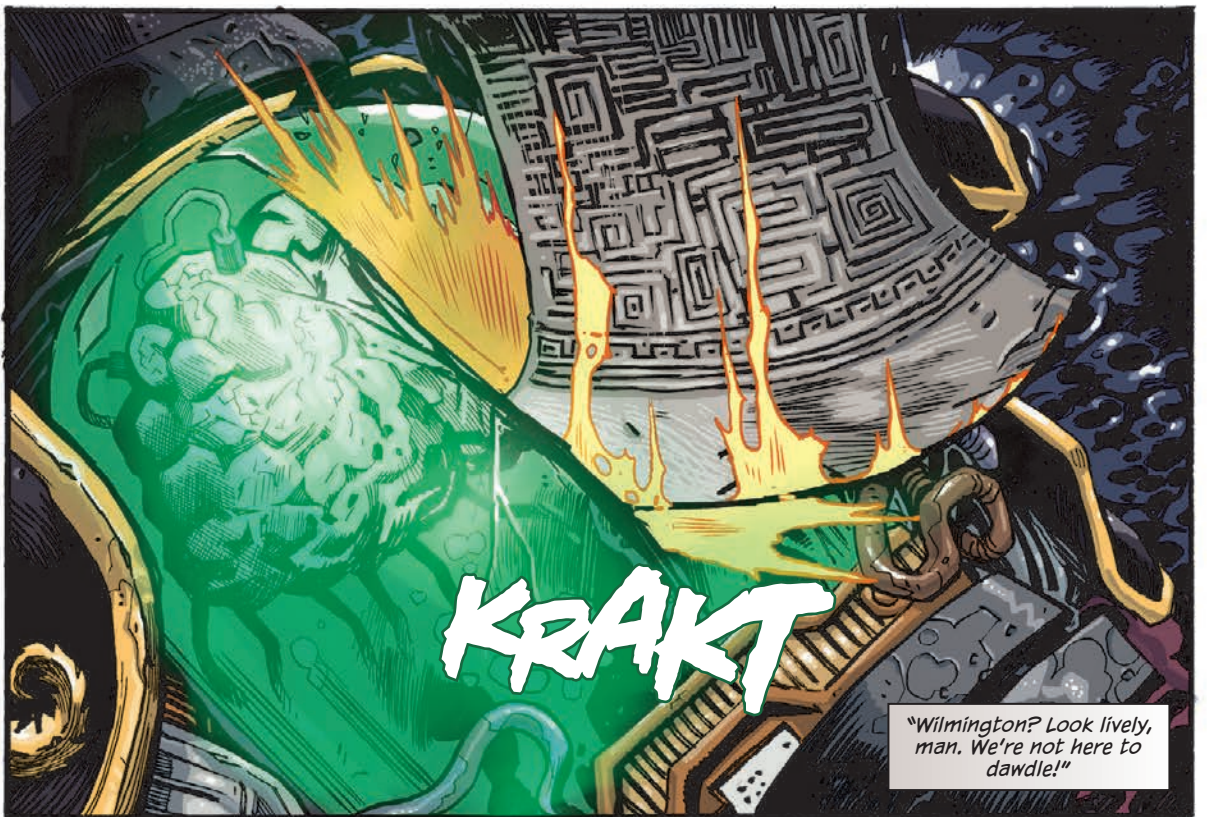
Yes, Harry  
is something of a  
recluse, I'm afraid. And  
shy of making new  
acquaintances.

Still, you must have made  
an excellent impression,  
since he's asked specifically  
for you to be appointed his  
permanent research  
assistant.



Congratulations,  
Ms. Court. You'll be  
working closely with  
the finest mind we  
have here at the  
Department.







Dunsany College's Department  
of Antiquarianism expedition to  
Lost Hyperborea, 1928:

Sorry, Lamont.  
But these splendid  
carvings -- you see them? All  
the hallmarks of late-period  
*homo serpentine*  
civilisation!

Expedition leader,  
Harry Wilmington.

I'd put this somewhere near  
the apex of the Mesozoic era,  
possibly even a non-degenerate  
offshoot of classic Valusian  
culture!

Then we're  
on the right  
track, then?  
Excellent.

Well, it  
certainly lends  
credence to some recent  
theories of mine about certain  
vestiges of pre-human Valusian  
civilisation surviving the Thurian  
cataclysm, not to mention--

KO BOOM

Look sharp,  
Sebastian  
darling--!





Much obliged,  
sister dearest. And  
a fine shot, to  
boot!

Think  
nothing of it, darling.  
Shall we push on now, or  
does Mister Wilmington  
have some more silly little  
carvings he wants to study?

You know, Lamont, when Mister  
Hampton told me that your sister  
Jocasta would also be joining us  
on this expedition, I did question  
the wisdom of bringing a **woman**  
along on such a dangerous  
endeavour...

It seems I owe  
you an apology,  
sir.

"Seriously, what  
the hell are these  
things?"