



THE KAPITAL

57-055669, 24-012654

RIGA, LATVIA





I--



THE MASSIVE
BLOC: "SATELLITE"

In the months of the Post-Crash, much of Eastern Europe descended into outright social anarchy.

A single ship exploding along the quayside attracted absolutely zero attention.



Hammered by lack of fuel, food, free access, and effective government, all the major cities of the old Soviet bloc are de facto no man's lands. Crash riots run for weeks, sometimes months.





The gas pipelines that kept Europe warm for so many decades run mostly empty now, and each winter the cold claims tens of thousands of lives.



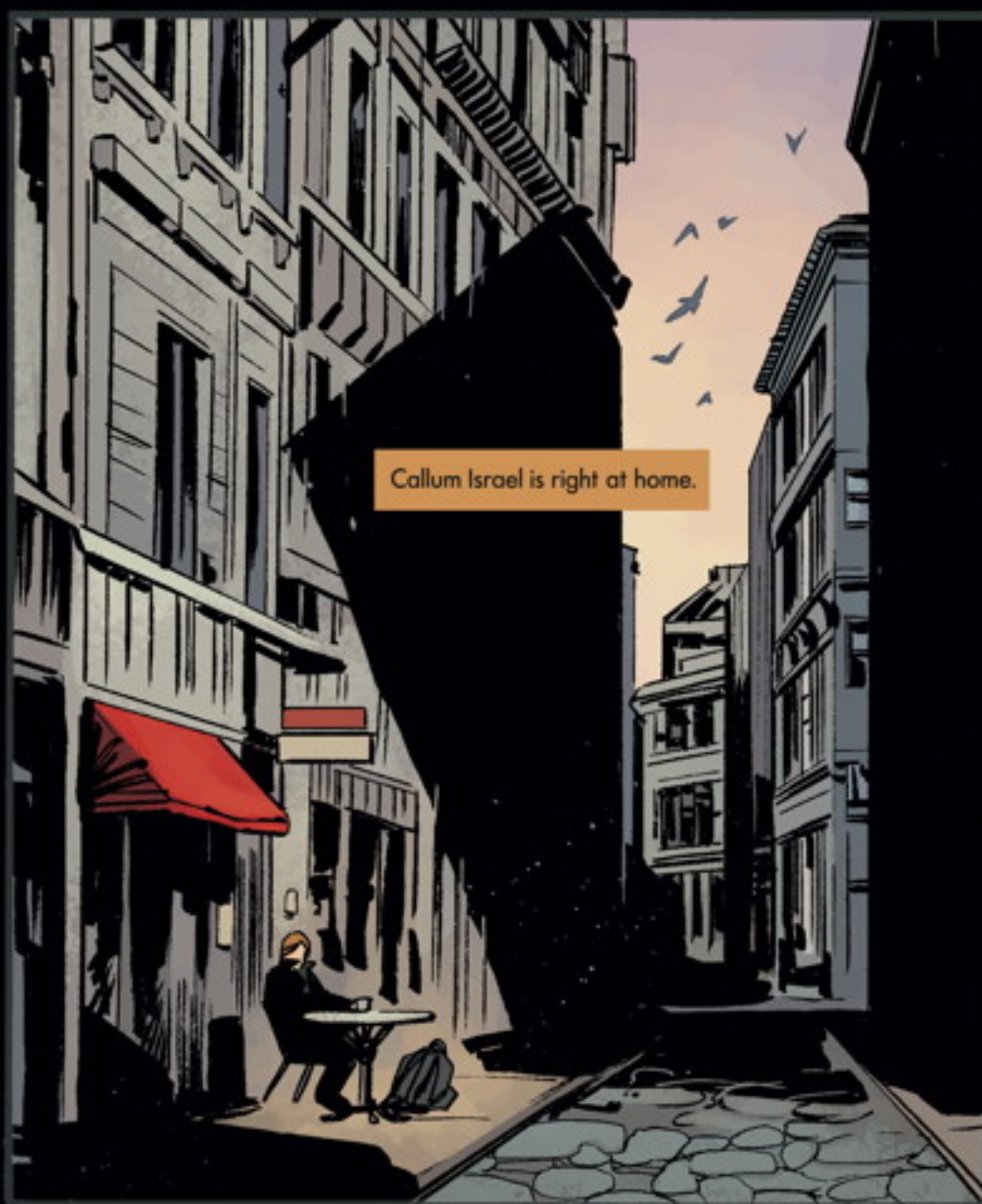
NATO forces, lacking a command structure, splinter and divide into factions, at times representing single cities, villages, or even just neighborhoods. A huge amount of military might in concentrated areas. Loose nukes and other fissile material are a currency all its own.



As is energy, with small, dependent nations clinging to whatever sources they can get their hands on.



In the Post-Crash,
Europe is dying.



Callum Israel is right at home.